

ULTIMATE RESTAURANT DESIGN

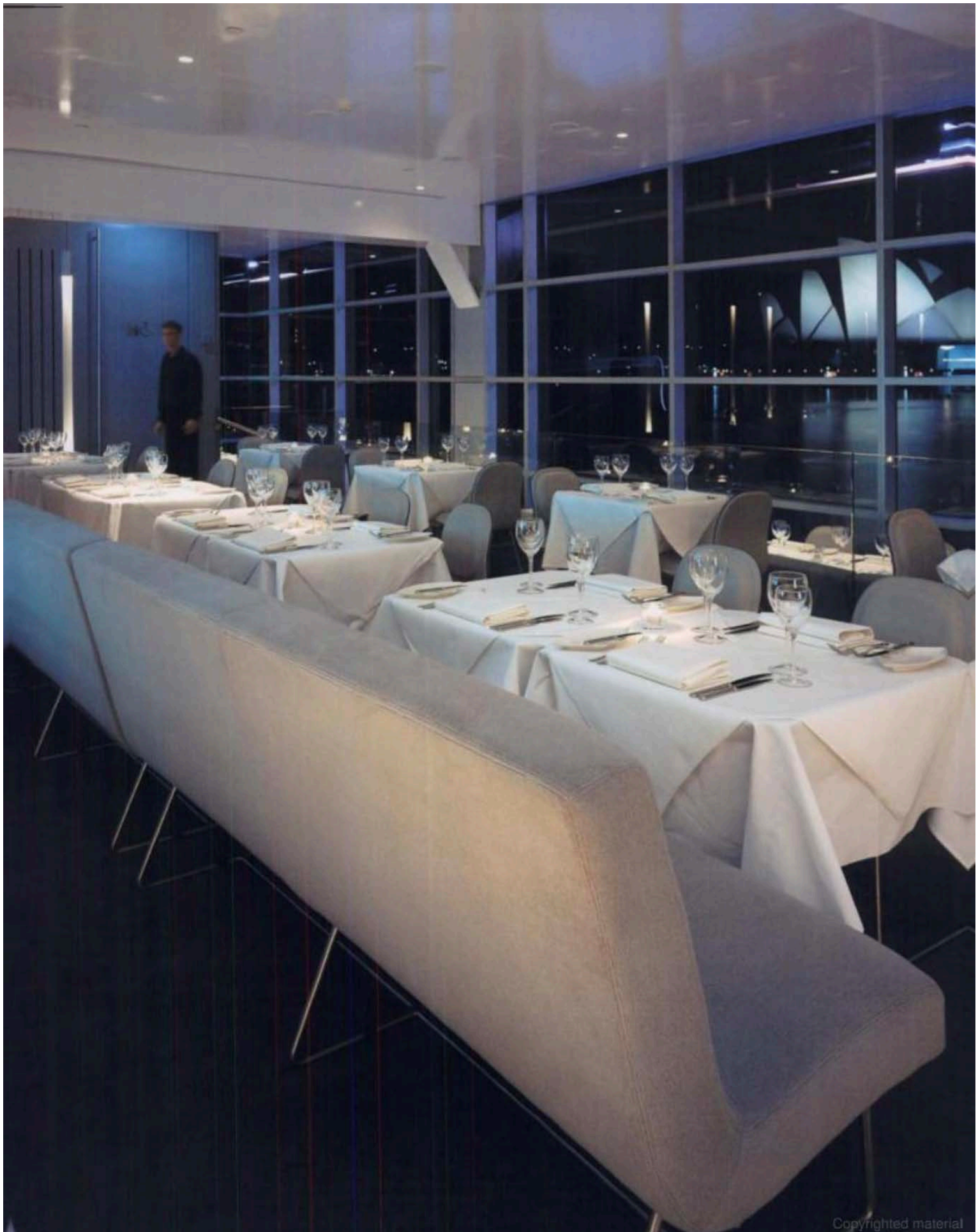
The image shows a modern restaurant interior viewed through a glass partition. In the foreground, there is a curved bar with a textured, dark surface. Behind the bar, there are white tables and red chairs. The lighting is warm and ambient, creating a sophisticated atmosphere. The glass partition has two circular handles.

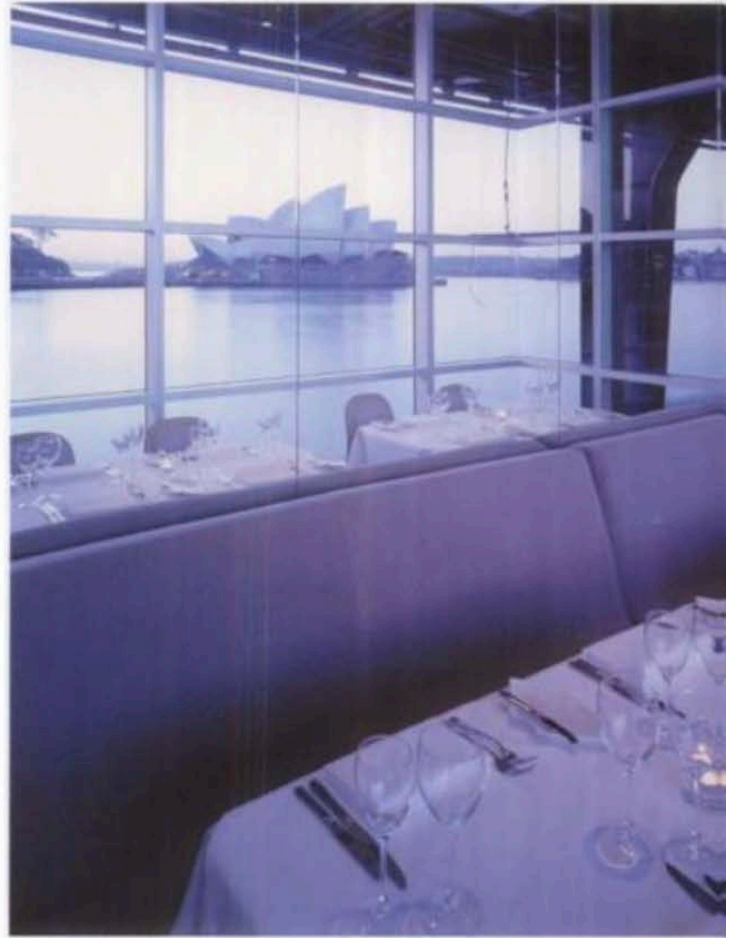
teNeues

Copyrighted material

Cruise Bar & Restaurant | Landini Associates

Collaborators: St. Hilliers Interiors Photographer: Ross Honeysett Chef: Warren Turnbull Address: Level 1-2, Overseas Passenger Terminal, West Circular Quay, Sydney, Australia Phone: +612 9251 1188 Design concept: Designer objects and furnishings, and most notably, the restaurant's close relationship with the landscape stand out.





Longitudinal section



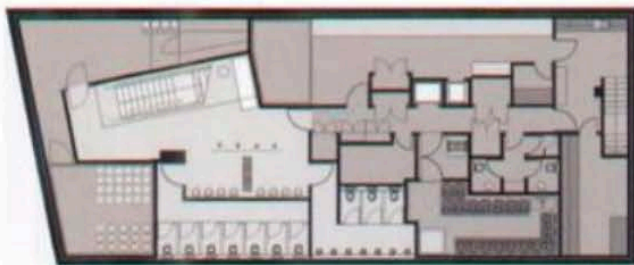
A rational and refined architectural style is the backdrop for interiors as attractive as they are functional and modern. The space is organized in different levels, each of which has been granted a specific function. The bar is on the bottom floor, while the upper level contains the restaurant.

Finesse und Rationalismus bilden das Leitmotiv bei der architektonischen Gestaltung dieser Innenräume, die so attraktiv wie funktional und modern sind. Das Lokal ist auf mehreren Ebenen angelegt, wobei jeder Ebene eine andere Funktion zugedacht wurde. Im Untergeschoss befindet sich die Bar, das Obergeschoss beherbergt ein Restaurant.

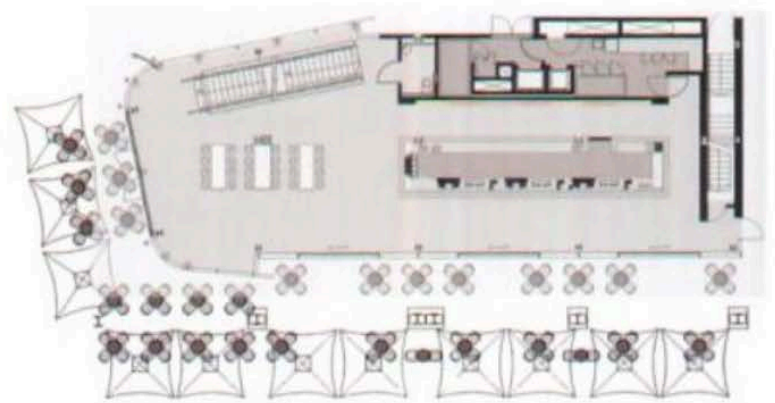
Une architecture rationnelle et dépouillée est la toile de fond de certains intérieurs où se mêlent attrait, fonctionnalité et modernisme. L'espace s'organise autour de différents niveaux dotés d'une fonction spécifique. Le niveau inférieur abrite le bar alors que le restaurant se trouve à l'étage supérieur.

Una arquitectura racionalista y depurada es el telón de fondo de unos interiores tan atractivos como funcionales y modernos. El espacio se ha organizado en diferentes niveles y cada uno de ellos se ha destinado a una función. El inferior acoge el bar, y en el superior se ha ubicado el restaurante.

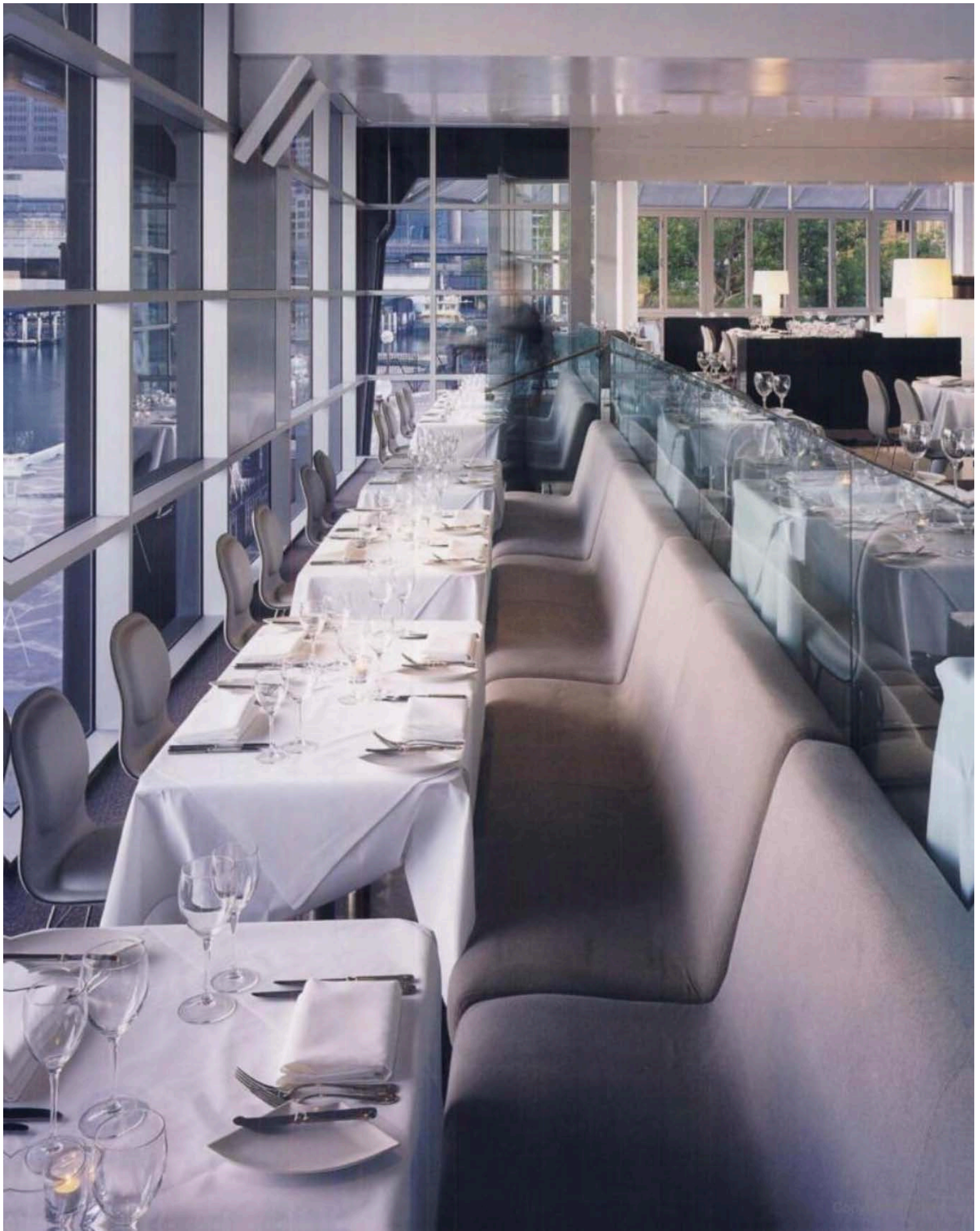
Una architettura razionalista e essenziale è il punto di riferimento per gli interni di questo locale, che sono allo stesso tempo confortevoli, funzionali e moderni. Lo spazio è suddiviso su più livelli, ognuno dei quali con una funzione specifica. Il bar è sul piano inferiore, mentre quello superiore è riservato al ristorante.

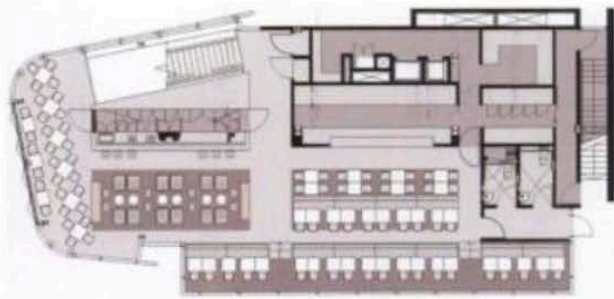
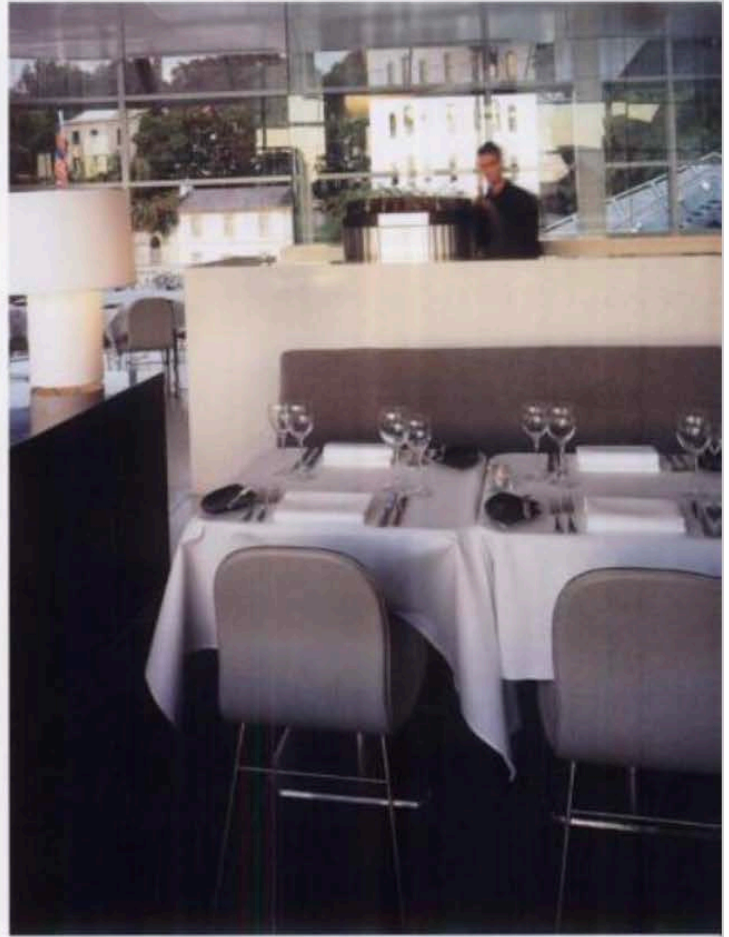
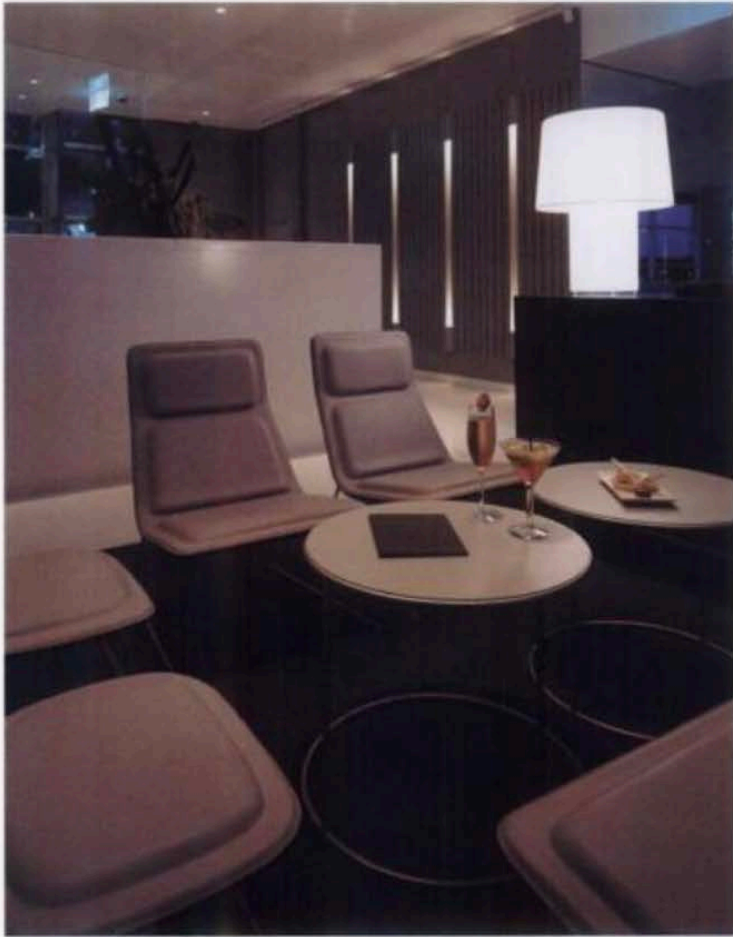


Ground floor

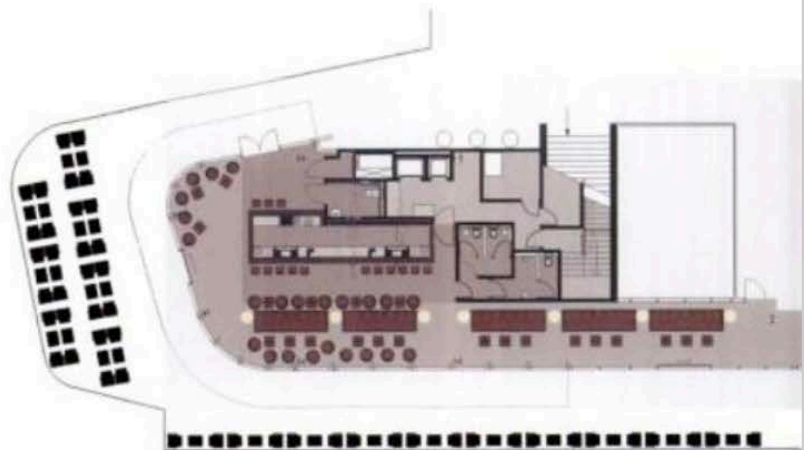


First floor





Second floor



Third floor

