

september/october 2000

AUSTRALIA

marie claire

\$7.40 (incl GST) NZ \$9.25 (incl GST)

Lifestyle

AUSTRALIA 2000

WHO'S SHAPING AUSTRALIAN STYLE?

WIN
\$22,000
WORTH OF
PRIZES



ALANNAH HILL:
SITTING PRETTY
IN ST KILDA

■ **ALANNAH HILL'S MELBOURNE HOME**

■ **USE YOUR NOODLE: JAPANESE COOKING**

■ **THE COOLEST PLACE TO STAY IN LONDON**

■ **SPRING COLOURS: INTERIORS GO GELATO**

PLUS TRAVELS IN ZANZIBAR ■ DONNA HAY BAKES CAKES



PRINT POST APPLICABLE

contents



COVER

Fashion designer Alannah Hill touches up in her pastel-pink St Kilda apartment. Photography by Monty Coles. Styling by Gaye Weeden. See *The New Romantic* page 58.

WHAT'S NEW

Innovative ideas, style leaders and must-know news

- 35 People
- 36 Design
- 39 Spaces
- 40 Eating Out
- 42 Drinks
- 45 Food
- 46 Books
- 48 Places
- 50 Travel
- 52 Gardens
- 54 Get a Lifestyle

DIRECTIONS

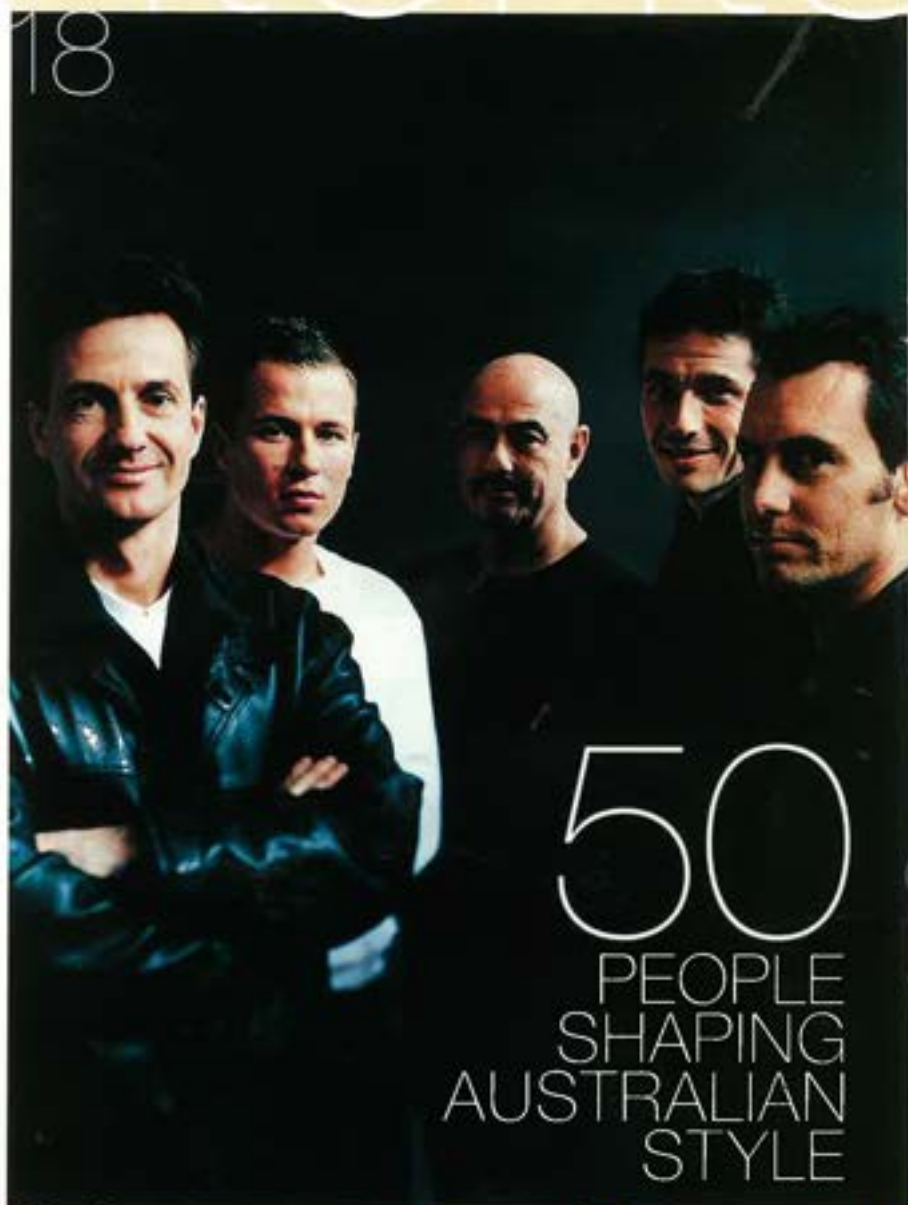
- 18 **THE DREAM TEAM 2000**
Meet 50 styemakers who are proving Australia's global reputation is not just about sport

HOME & LIFESTYLE

- 58 **THE NEW ROMANTIC**
Alannah Hill's St Kilda apartment is an explosion of pink finishes and French-style antiques
- 66 **BEING JOHN MCPHEE**
Art and curiosities leap from every surface. Look inside the world of art collector John McPhee
- 76 **TAKE ME TO THE RIVER**
Tom Boycott and Jessica Bokey have created a Balinese-inspired hotel on the Hawkesbury River
- 92 **MARSHALL LAW**
Architect Sam Marshall opens up his textured, award-winning Sydney warehouse home
- 109 **MY BEAUTIFUL LAUNDRY**
Keep your precious cushions and throws as new with these simple washing and care techniques
- 178 **MY LIFESTYLE**
Discover the artful mind of Mary Kostakidis

FOOD & DRINKS

- 100 **BREAKFAST AT BILL'S**
From coconut bread to sunrise juice, chef Bill Granger shows off his early-morning taste tricks



directions



Donna Hay



Stephen Pannell



Marc Schamburg

Michael Alvisse

the exploration of the three main components – space, form and material – providing a dynamic continuity of all elements.”

DAVID KATON, 51, IAIN HALLIDAY, 39 DESIGNERS

Practice: Burley Katon Halliday is a medium-sized interior design and architecture practice in Paddington, focusing on residential, restaurant and commercial interiors.

Recent projects: Republic apartments, East Sydney; Kirketon hotel (including restaurant Salt and bar Fix), Darlinghurst; Summit Restaurant, Australia Square, Sydney; Oh! Calcutt restaurant, Darlinghurst; Orson & Blake homewares, Surry Hills.

Contribution to Australian style: Responsible for the Sydney aesthetic of clean modernist interiors, Iain and David are the most sought-after design partnership in the city. Their firm has been partly responsible for developing the market for signature-branded design. In a perfect Zen-inspired world, we would all inhabit BKH spaces.

On design: “Strong bones, direct planning and bold use of materials and elements are the basis of all projects. Design twists and quirks appropriate to project and client give individuality and one-off style.” *David Katon*

VOLKER KLEMM, 38, LANDSCAPE DESIGNER

Practice: Volker Klemm Landscape Design is a sole-practitioner firm working in Sydney's eastern and northern suburbs and specialising in residential design.

Signature projects: Private garden, Bellevue Hill, using traditional Balinese style around a series of pavilions and including tiered sandstone, carved stone panels and perfumed plants; private garden, Stanmore, featuring a long, stepped water canal capped in pale stone, a raised daybed, grasses and giant bamboo.

Contribution to Australian style: Volker's gardens are calm and livable spaces that embrace the people that use them.

On design: “I enjoy making peaceful spaces; strong lines and simple curves calm a garden down. Textures are more important than flowers which are transitory. I like massing grasses with big leaves, and spiky-looking plants with fleshy-leaved plants.”

MARK LANDINI, 42 DESIGNER

Practice: Mark is creative director of Landini Associates, a multi-discipline design company based in North Sydney, developing local and international brands.

Significant and current projects: Let's Eat, Melbourne; Volvo Gallery, Sydney; Awaba cafe, Balmoral; David Jones “food chain” stores (first store opening in Melbourne in November); lifestyle department store, Sydney CBD; three-story bar and restaurant in Sydney Passenger Terminal (early 2001).

Contribution to Australian style: Yes, he's English, but the former creative director of Conran Design uses light and a rainbow of white to weave the complex elements of design into singular, very Australian visions.

On design: “Australia has become so confident in its ability that we're just enjoying being around. No matter what we design, the same philosophy applies: live simply, do simple things, create strong work that lasts.”

MAURO MARCUCCI, 30 RESTAURATEUR

Position: Mauro is the owner of Melbourne cafe Termini.

Current projects and achievements: The former co-owner of Caffè e Cucina, Mauro is working on the development of the St Kilda Railway Station and consulting on two international projects.

Contribution to Australian style: Mauro's Caffè e Cucina is a Melbourne institution,

and at Termini, Mauro oozes charm and passion and a devotion to food and wine that captivates every diner.

On eating out: “The modern world wants to eat well and not spend a fortune, so my aim is to give people simple, clean Italian food at a good price. I also think that every place should have its own sense of originality, something new that defines it from the rest.”

RANDAL MARSH, 41, ROGER WOOD, 43 ARCHITECTS

Practice: Wood Marsh is a medium-sized Melbourne practice, spanning institutional and residential architecture, commercial interiors and urban design.

Recent projects: Docklands Infrastructure; Mansion Hotel, Werribee Park; Malthouse Arts Precinct; Daylesford Spa Complex.

Contribution to Australian style: As Victoria's young agents provocateurs, these boys are shaking up the local scene, winning large projects and contributing to the progressive architectural “renaissance” in Melbourne. Wood Marsh's landmark buildings, bridges and road barriers are sculptural and monumental with adventurous palettes of textured materials.

On design: “Optimism and potential.”

BRYAN MARSHALL, 38, DAVID GRANGER, 38 INDUSTRIAL DESIGN CONSULTANTS

Practice: Bang Design is a small industrial design consultancy based in Balmain, with a scope of works spanning product, furniture, graphic and exhibition design.

Recent projects: Caroma bathroom products; PLUS Range of furniture for Formway Furniture; NextCaroma exhibition for Designex 2000; Bar Ristretto espresso bars.

Contribution to Australian style: In Australia's developing design scene, Bang's fresh, dynamic approach has been an ▶

that expresses the characteristics of the year's harvest.”

WENDY STUCKEY, WINEMAKER